



INTERNATIONAL  
WHALING COMMISSION

# ACKNOWLEDGEMENTS

Vice Chair of CC

Chairs of Working Groups

Secretariat

Chair of SC



WGW David Weller

# Conservation Committee report



Franciscana Miguel Iñiguez

Chair: Lorenzo Rojas-Bracho (Mexico)  
Vice Chair: Jamie Rendell (UK)

IWC66 2016

CC meetings

2014 & 2015

20 VS 38 docs

18 vs 31 pgs

**SIGNIFICANT MEETING**

Speaking rights to  
observers

Strategic Planning and  
workplan for CC

Joint work CC/SC

Bycatch mitigation  
workplan



# Key Conservation Committee developments

Strategic planning

Working with other Committees

Partnerships

Work programme

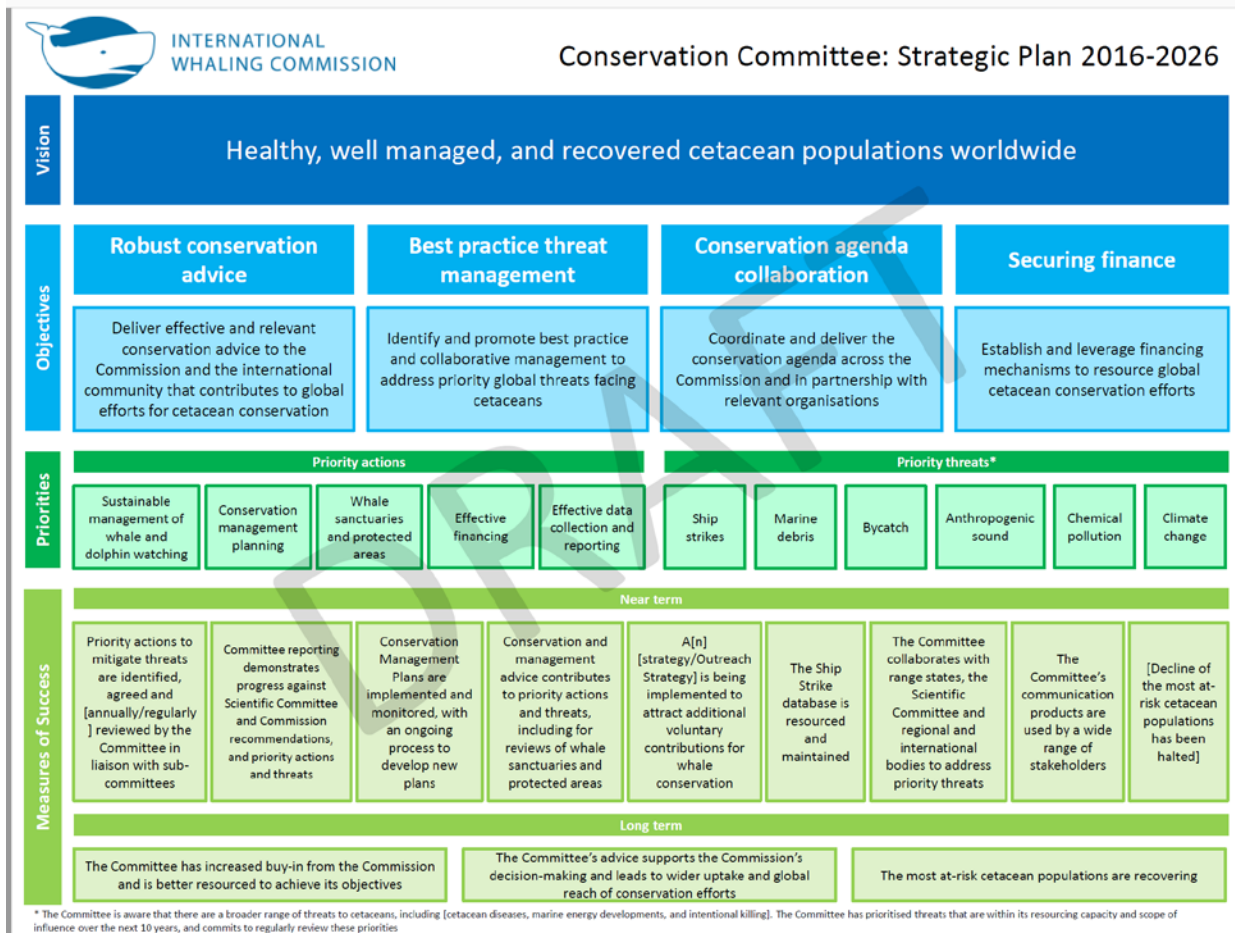


# Intersessional activities

A range of intersessional meetings

- 2015 and 2016 planning meetings
  - Meetings of the SWG Whale Watching
  - Meeting of the SWG Conservation Management Plans
  - Joint CC/SC Working Group
  - Southern Right Whales SW Atlantic population
  - Franciscana CMP development
  - And various correspondence groups
- 

# Endorsed a Strategic Plan 2016-2026



(IWC/66/CC08 and CC10)

# Vision

Healthy well-managed populations and  
recovered cetacean populations  
worldwide





# Objectives

- Robust conservation advice
- Best practice threat management
- Conservation agenda collaboration
- Securing finance



# The Strategic Plan identifies :

- Priority actions for the CC
- Priority threats for the CC
- Measures of success
- Partnerships
- Resourcing



# Working with other Committees

- Joint Conservation Committee/Scientific Working Group established through Resolution 2014-4 (IWC/66/CC25 &CC24)
- Intersessional group to develop a draft structure for a web-accessible database of recommendations
- Intersessional Correspondence on Strengthening IWC Finance



# Working with other organisations

- International Maritime Organisation
- UN General Assembly, UNEP and UNEA
- FAO
- CMS
- Biodiversity Liaison Group
- SPREP
- And others



# Review of progress

- Conservation Management Plans
- Ship strikes
- Sanctuaries Review
- Marine Debris
- Whale watching
- Bycatch



# Work Plan

Living document

Outlines aims, actions, and progress for each work stream

Support progress on engagement, funding and other strategic considerations to enable the CC to support the work of the Commission



# Thank you



